

SUPERFICIES

QUIOSCO BAR = Aprox. 12.38 m²

TERRAZA ZONA 1 = Aprox. 12.06 m²
 (3 módulos de 4 personas C/u) 12 personas
 (+1 módulo de 3 personas)

TERRAZA ZONA 2 = Aprox. 66.38 m²
 (15 módulos de 4 personas C/u) 60 personas
 (+1 módulo de 3 personas)
 (+3 módulos de 2 personas)

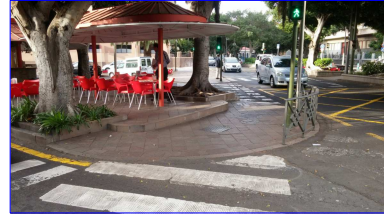


Foto 1

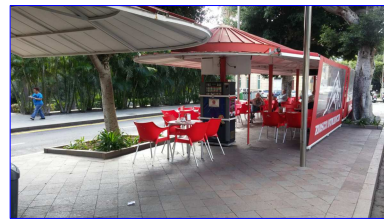


Foto 2

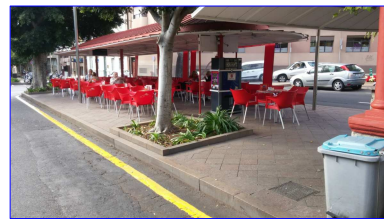


Foto 3

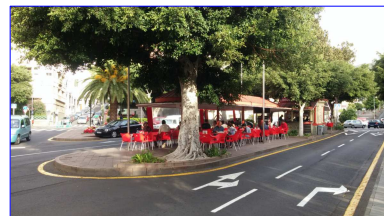


Foto 4



Foto 5

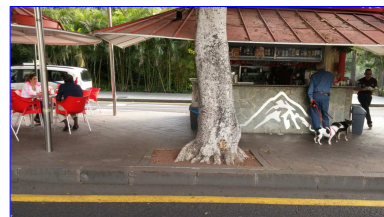


Foto 6

PROPUESTA DE TERRAZA
QUIOSCO BAR NUMANCIA (C/ Numancia / Avda. 25 de Julio)